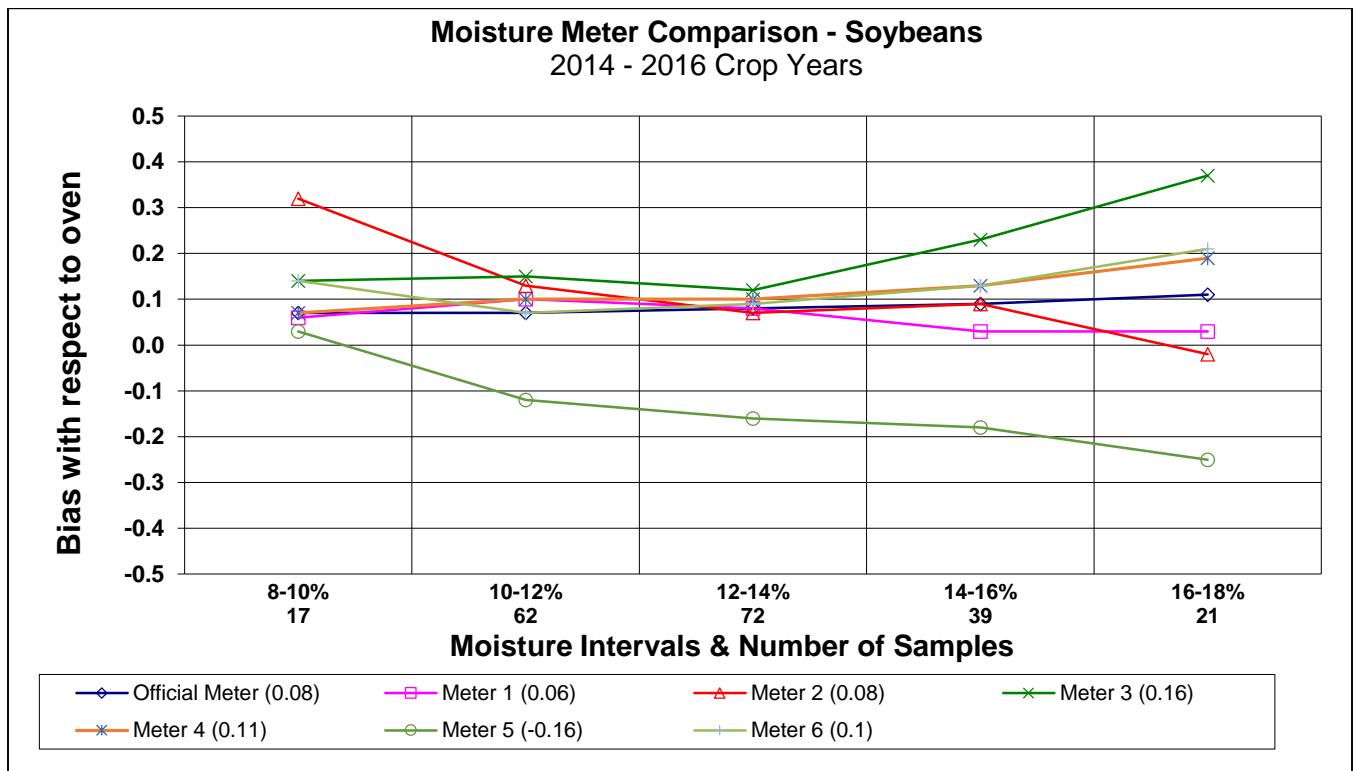
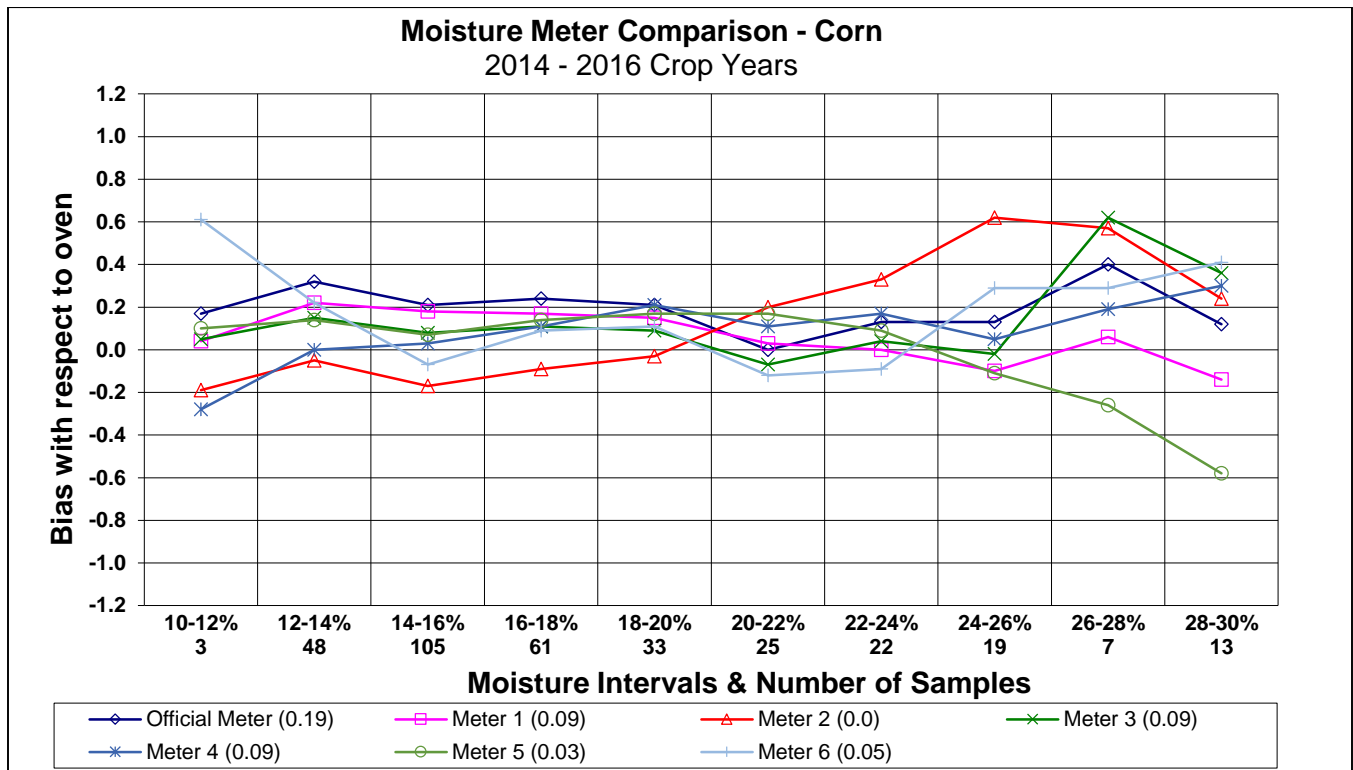
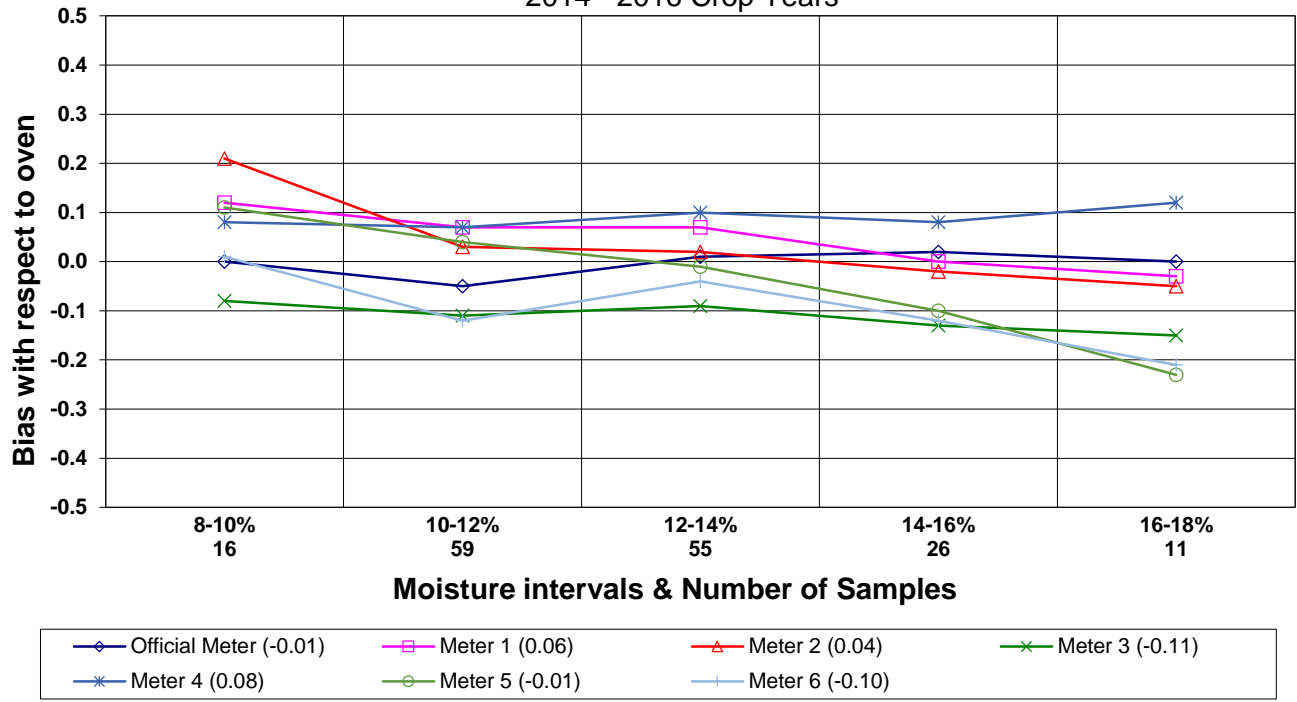


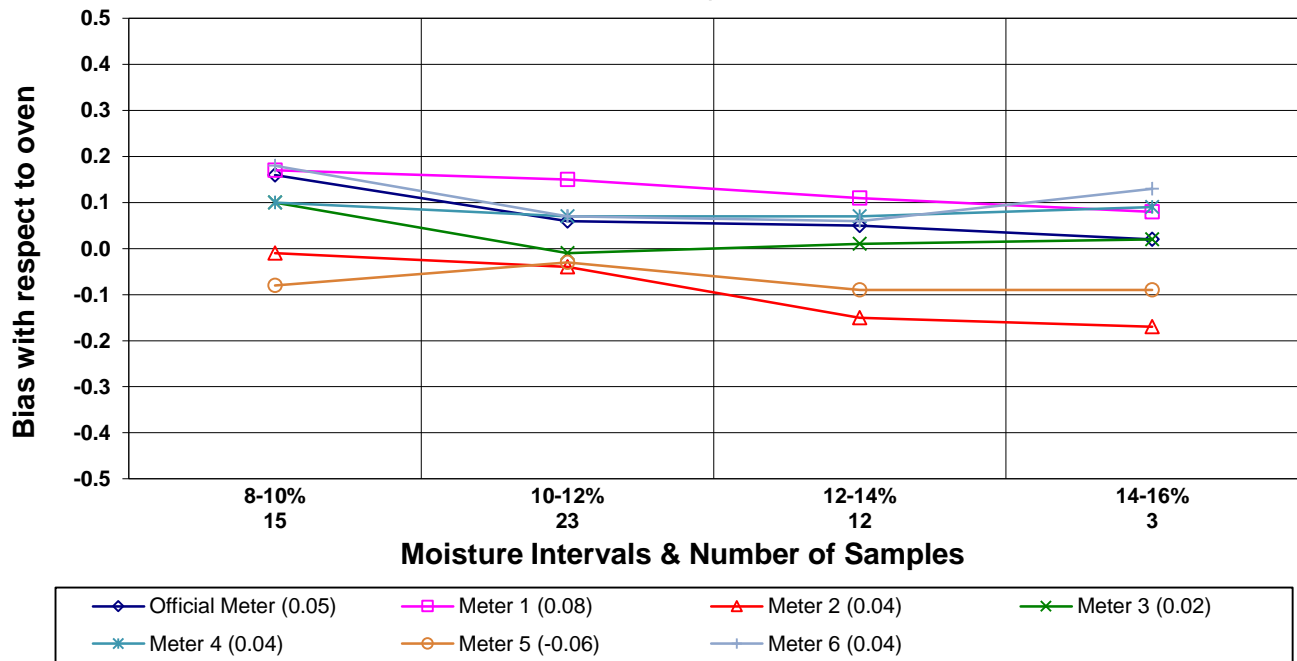
2014 – 2016 GMM Phase II Comparisons: August 2017



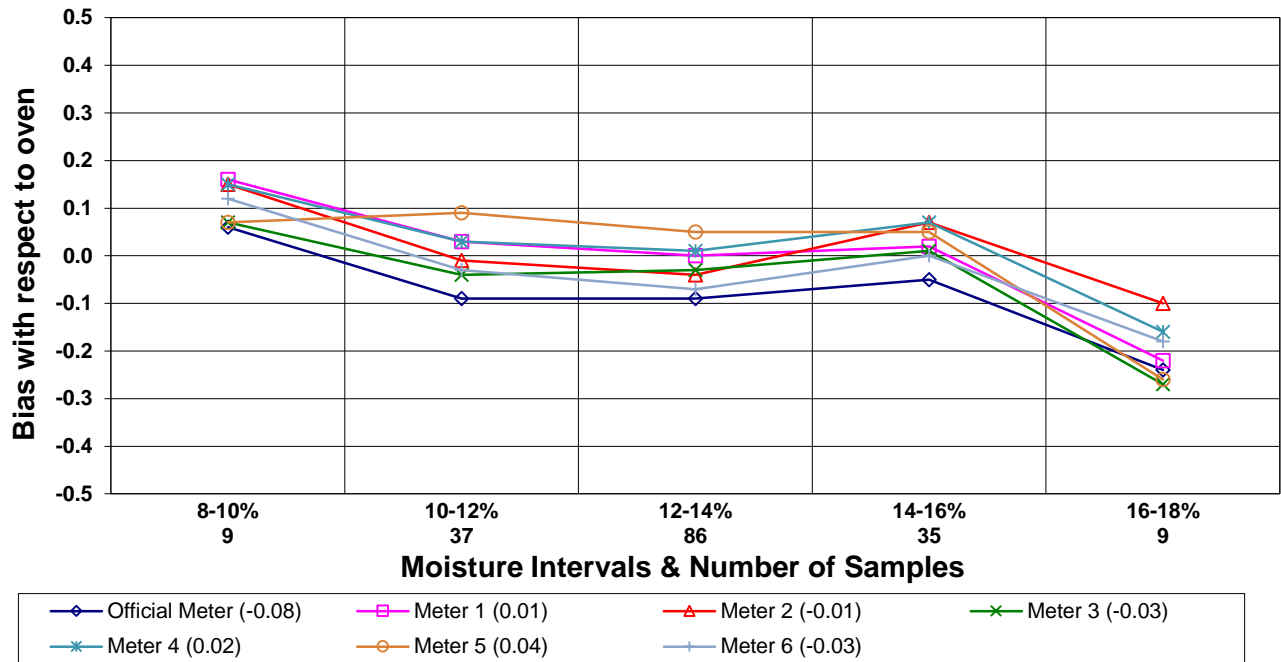
Moisture Meter Comparison - Hard Red Winter Wheat 2014 - 2016 Crop Years



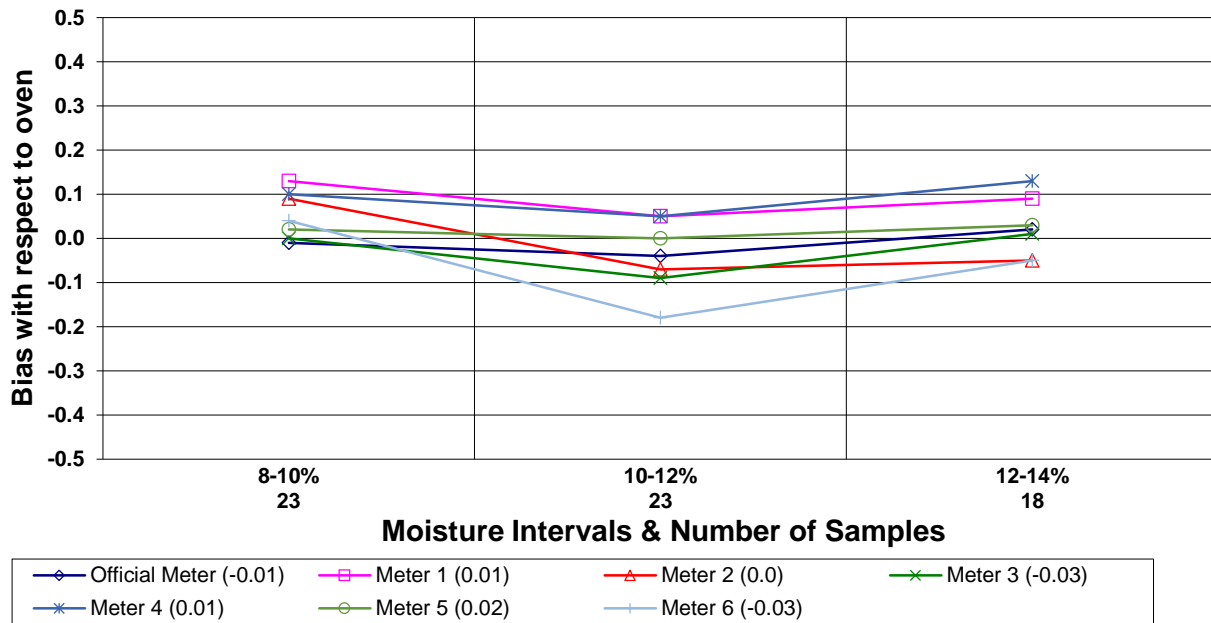
Moisture Meter Comparison - Durum 2014 - 2016 Crop Years



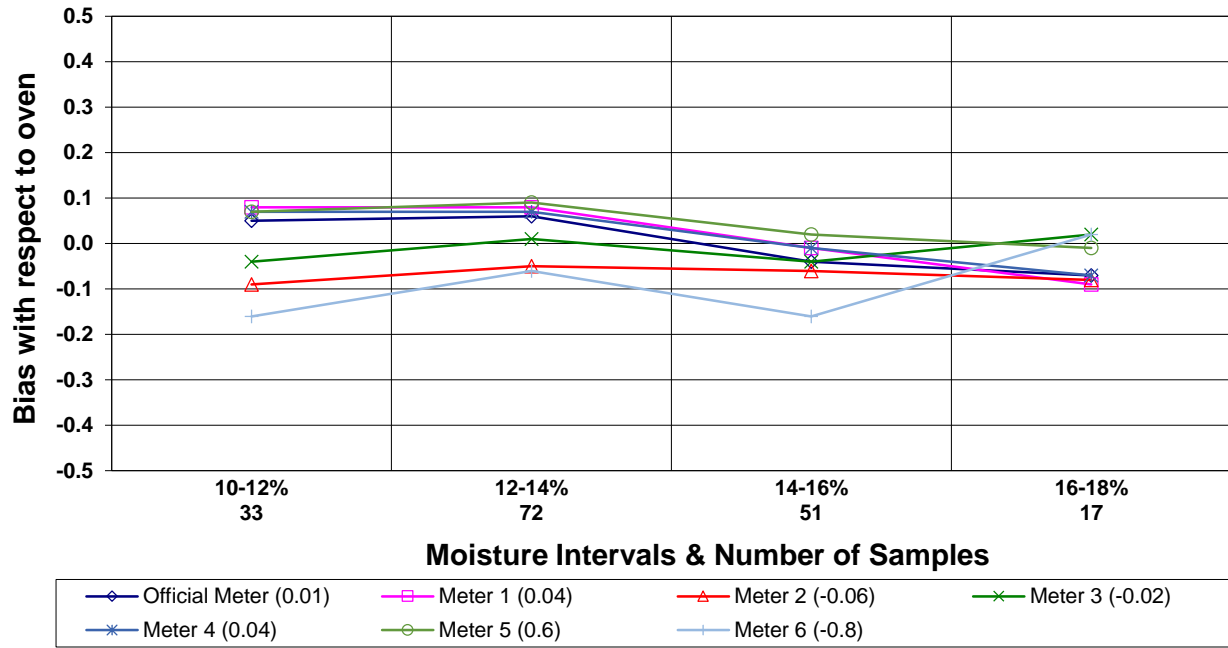
Moisture Meter Comparison - Hard Red Spring Wheat 2014 - 2016 Crop Years



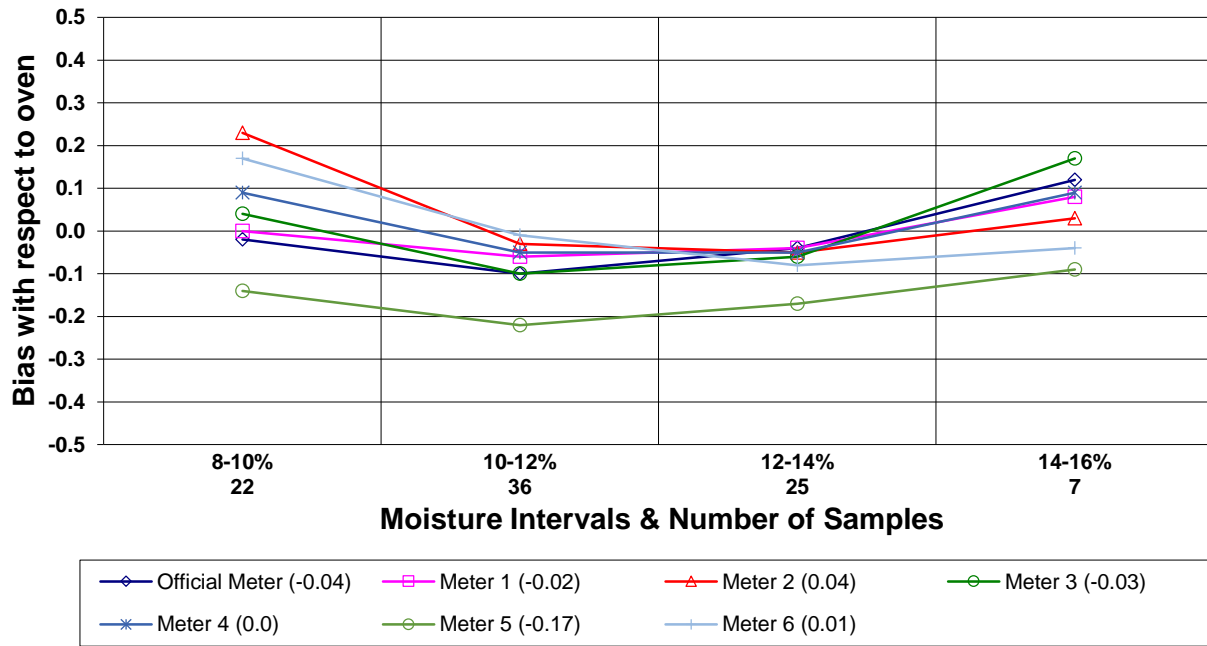
Moisture Meter Comparison - Hard White Wheat 2014 - 2016 Crop Years



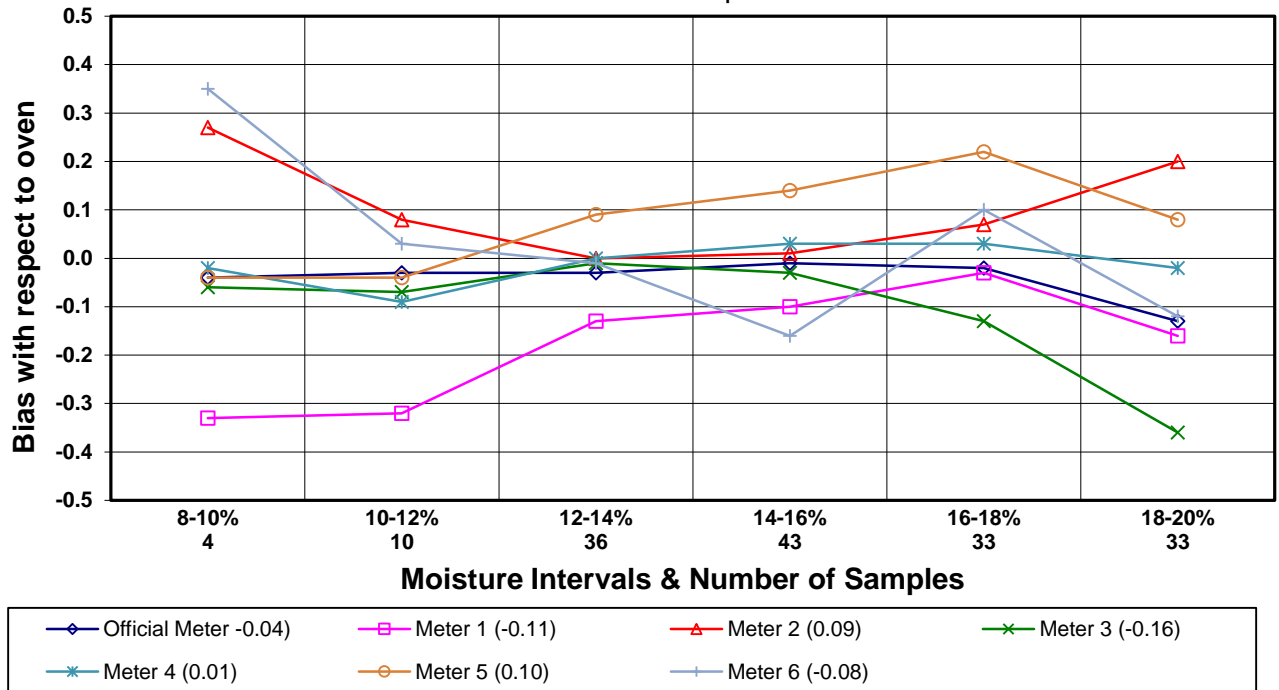
Moisture Meter Comparison - Soft Red Winter Wheat
2014 - 2016 Crop Years



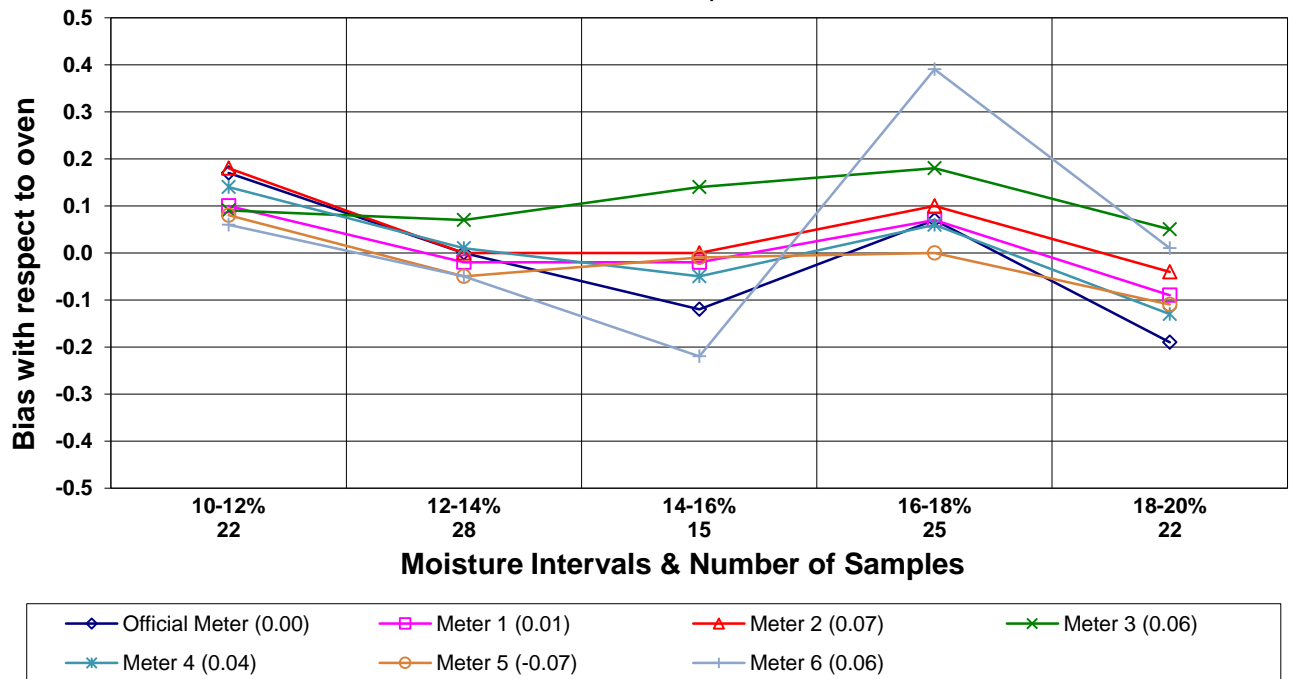
Moisture Meter Comparison - Soft White Wheat
2014 - 2016 Crop Years



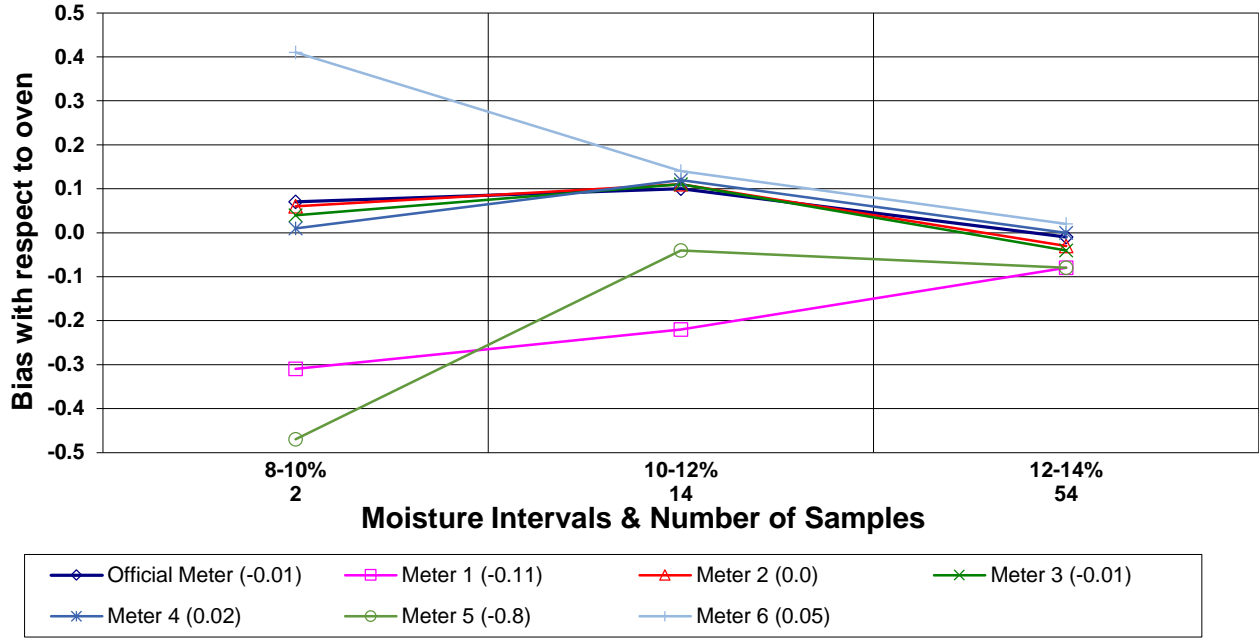
Moisture Meter Comparison - Long Grain Rough Rice 2014 - 2016 Crop Years



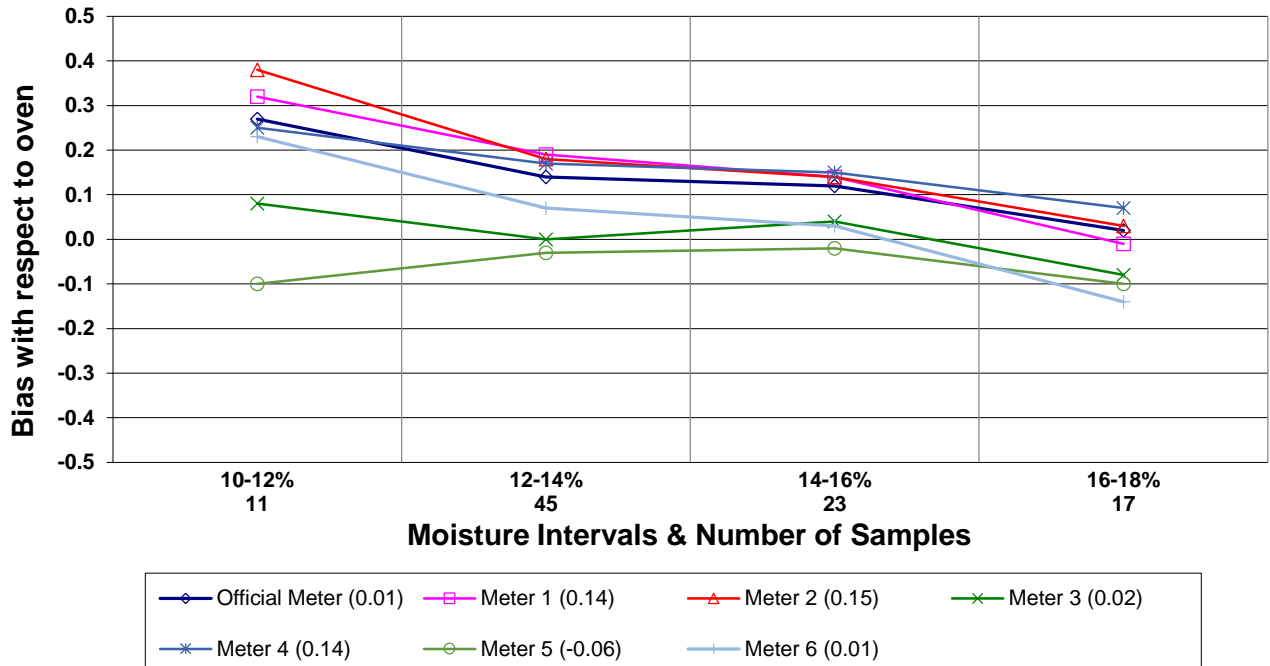
Moisture Meter Comparison - Medium Grain Rough Rice 2014 - 2016 Crop Years

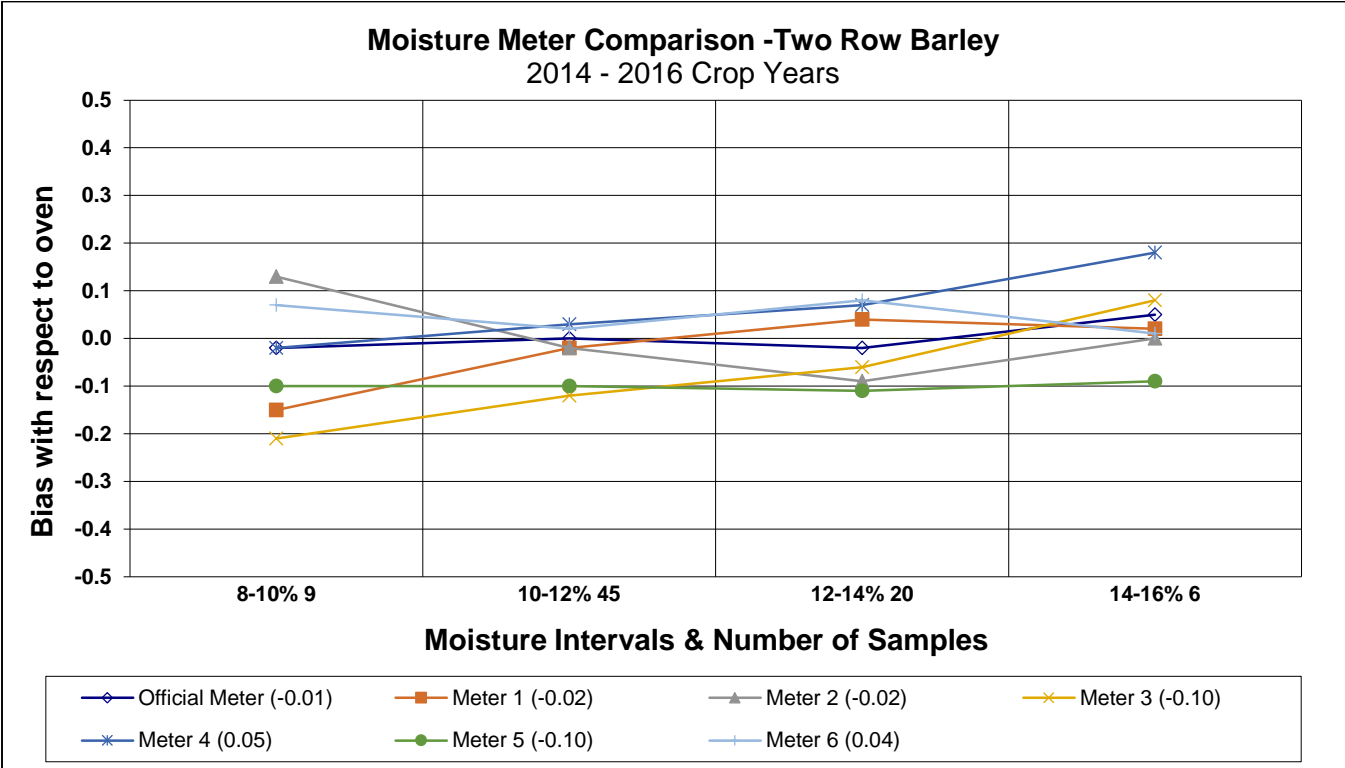
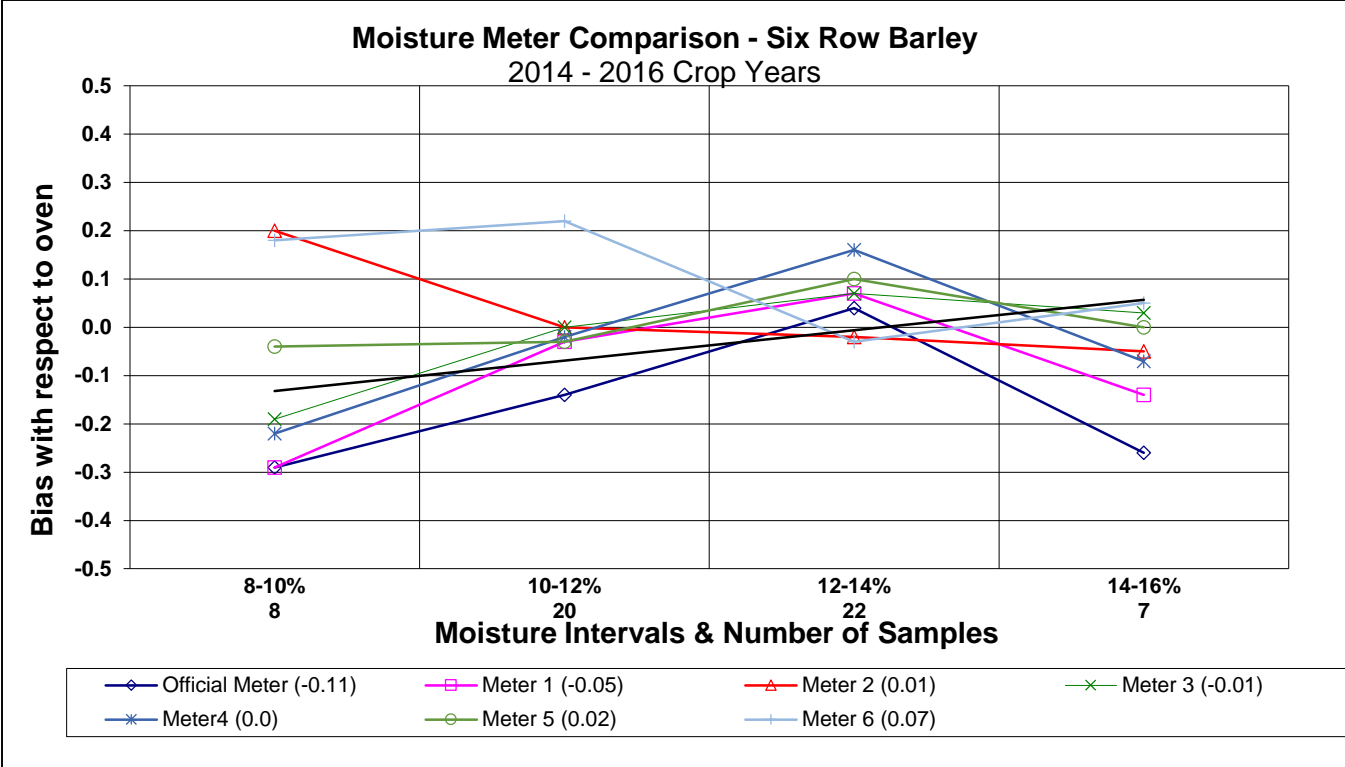


Moisture Meter Comparison - Oats
2014 - 2016 Crop Years

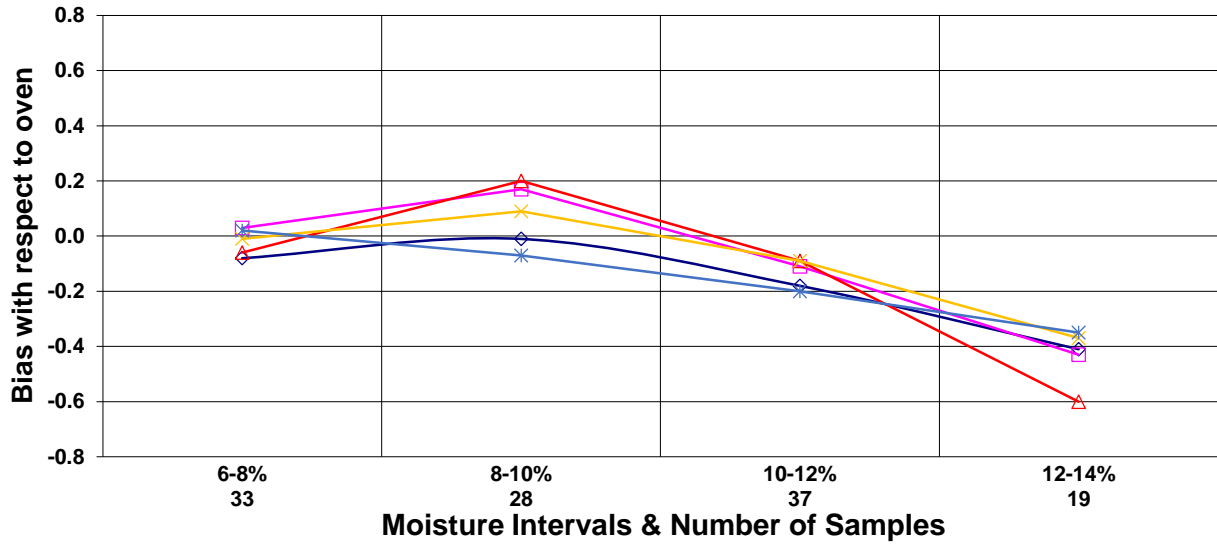


Moisture Meter Comparison - Grain Sorghum
2014 - 2016 Crop Years





Moisture Meter Comparison - Sunflower Seed 2014 - 2016 Crop Years



◆ Official Meter (-0.15)
 □ Meter A (-0.07)
 △ Meter B (-0.14)
 × Meter C (-0.08)
 * Meter D (-0.11)

On May 1, 2013, the USDA GIPSA official moisture meter for all fifteen NTEP grains switched to the Unified Grain Moisture Algorithm (UGMA) technology. The Official Meter designation in the above comparison charts is for the UGMA master system.